

Breakout Session

# Completed Industrial Components Portfolio with 12<sup>th</sup> Gen Intel<sup>®</sup> Core<sup>™</sup> Processors

Joanne Chiu, ASUS IoT

ASUS IoT

# About ASUS



## Worldwide Office

Branches in **71** Countries  
& 6 Continents



## 30%+ R&D

Over **15,000** Employees  
**5,000** R&D Members



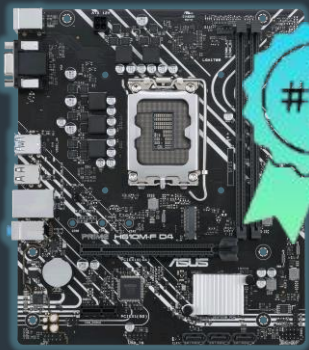
## US\$19 Billion

2021 Revenue



## Fortune Award

The World's Most  
Admired Company 2022



# ASUS IoT Proposition



Dedicate 300+ AI professionals

Est. 1<sup>st</sup> Nov. 2019

System  
Business Group

Open Platform  
Business Group

AIoT  
Business Group

AI Solution  
Business Unit

IoT  
Business Unit

Dedicate 200+ RD professionals

# Targeted Vertical Markets



**Industrial (IIoT)**



**Retail (IoRT)**



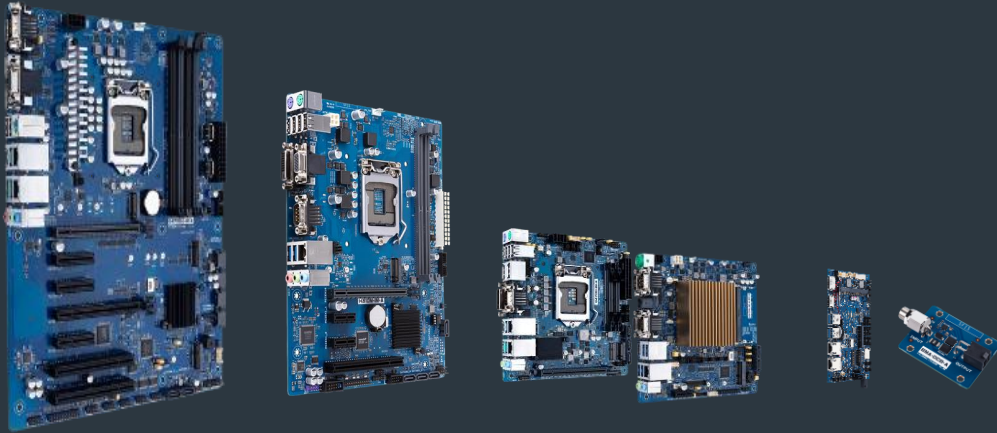
**Medical (IoMT)**

We provide AI-driven infrastructure, engineering resources, software, devices and services that empower digital transformation and turn smart manufacturing, smart healthcare and smart retail into reality.

Our robust, secure and reliable cloud capabilities provide a solid foundation for our smart solutions. Our global sales and service presence, extensive ecosystem of major cloud platform providers and collaborative technology partnerships offer unrivaled resources at our customers' fingertips. Our business approach is open and flexible. We believe in always putting our customer's success first.

# Complete Industrial Components Portfolio

## *Industrial Motherboards & Industrial Accessories*



*All form factors: ATX, mATX, mini-ITX, Thin ITX, 3.5" SBC*

## *Industrial Edge Computers*



*4U rackmount computers, embedded computers*

# Product Roadmap

12<sup>th</sup> Gen Intel® Core™ Processor  
(Code Name: Alderlake-S)

**ATX**  
Maximized expandability



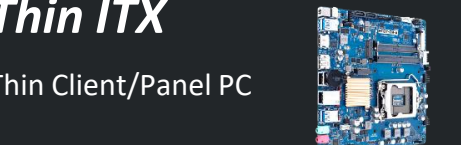
**Micro ATX**



**Mini ITX**  
Compact Size/ Box PC



**Thin ITX**  
Thin Client/Panel PC



| Skylake-S  | Coffeelake-S    | Cometlake-S | 12 <sup>th</sup> Gen Intel® Core™ Processor (Code Name: Alderlake-S) |
|------------|-----------------|-------------|--|
| Q170A-IM-A |                 | Q470EA-IM-A | R680EA-IM-A  |
| H110A-IM-A |                 |             | Q670EA-IM-A  |
|            |                 |             | H610A-IM-A   |
| Q170M-CM-A |                 |             | Q670EM-IM-A  |
| H110M-CM-A |                 |             | H610M-IM-A   |
| H110M-IM-A |                 |             |  |
|            | Q370I-IM-A R2.0 | W480EI-IM-A | R680EI-IM-A  |
|            | H310I-IM-A      | Q470EI-IM-A | Q670EI-IM-A  |
|            |                 |             | H610I-IM-A   |
| H110T-CM-A |                 |             | H610T-IM-A   |

# Product Roadmap

## 12th Gen Intel® Core™ Mobile Processors (Code Name: Alderlake-P)

3.5"

Thin Client/Panel PC



ApolloLake

WhiskyLake-U

- E395S-IM-AA
- E394S-IM-AA
- E393S-IM-AA

- C786ES-IM-AA
- C583ES-IM-AA
- C381ES-IM-AA

Consumer SoC (2~3Y)

Embedded SoC (7Y)

- C7125S-IM-AA
- C5124S-IM-AA
- C3121S-IM-AA

- C7126ES-IM-AA
- C5124ES-IM-AA
- C3121ES-IM-AA

Box PC

Embedded Fanless Computer



PE200S

PE200U

PE2000U

# ASUS IoT ADL-S Series Key Features



✓ **Excellent computing ability** support 12th Gen Intel® Core™ Processors

✓ **Faster transfer efficiency**

- Support DDR5 (up to 40% higher bandwidth than DDR4)
- PCIe Gen 5 slot onboard (up to double speed than PCIe Gen 4)

✓ **Flexible power supply choice** support ATX/12V DC in

✓ **Better information security** with dual Intel LAN

✓ **Great monitoring/modifying ability** with ASUS IoT Suite

Up to  
**1.36x**  
faster  
single-thread  
performance

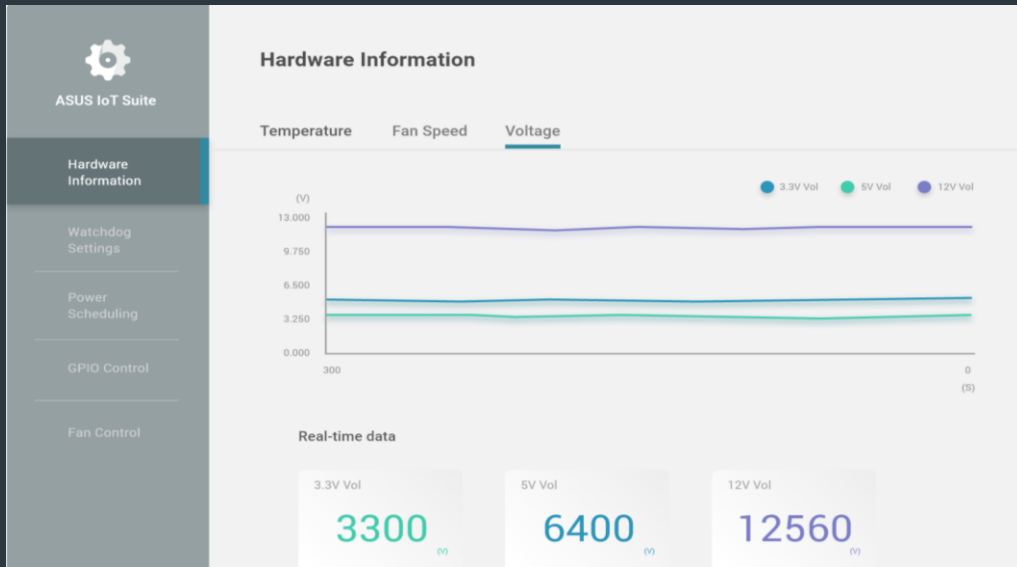
Up to  
**1.94x**  
Graphics  
performance

Up to  
**1.35x**  
faster multithread  
performance

Intel, the Intel logo, OpenVINO™, the OpenVINO™, and other Intel marks are trademarks of Intel Corporation or its subsidiaries.



# ASUS IoT Suite



The screenshot displays the 'GPIO Control' section of the ASUS IoT Suite. The 'GPIO' pin is set to 1, and the 'Get Status' button is visible. Below this, there are two columns: 'Direction' and 'Value'. The 'Direction' column has four options: 'Output', 'Output', 'No Set', and 'Input'. The 'Value' column has two options: 'High' and 'Set Value'. The 'Output' option in the 'Direction' column is currently selected.

**Our ready-to-go solution providing user-friendly interface, GUI, API**

- ✓ **Clear real-time hardware information**  
- temperature, voltage, fan speed
- ✓ **Easy Watchdog settings**
- ✓ **Flexible GPIO control**
- ✓ **Agile fan control configuration**
- ✓ **Power scheduling**

# Industrial Application: AI Food Sorting

Powerful 4U Rackmount Industrial Computer



4U Rackmount  
Industrial Computer



## ✓ Excellent Performance

- Support 12th Gen Intel® Core™ Processors
- Support the latest DDR5 technology

## ✓ High expandability

- Support dual premium graphic cards
- Support multiple expansion cards

## ✓ Better information security

- Dual Intel LAN onboard (up to 2.5G LAN)
- TPM header on board

Intel, the Intel logo, OpenVINO, the OpenVINO, and other Intel marks are trademarks of Intel Corporation or its subsidiaries.

## Learn more about ASUS IoT



▲ ASUS IoT website



▲ ASUS IoT LinkedIn

The background features a complex, abstract pattern of thin, overlapping lines in shades of blue, purple, and gold, creating a sense of motion and depth. A solid teal rectangular box is positioned on the left side of the frame, containing the text.

Thank you  
for watching!

# Intel Legal Notice and Disclaimer

Intel technologies may require enabled hardware, software or service activation.

No product or component can be absolutely secure.

Your costs and results may vary.

Code names are used by Intel to identify products, technologies, or services that are in development and not publicly available. These are not "commercial" names and not intended to function as trademarks.

Intel is committed to respecting human rights and avoiding complicity in human rights abuses. See Intel's [Global Human Rights Principles](#). Intel's products and software are intended only to be used in applications that do not cause or contribute to a violation of an internationally recognized human right.

© Intel Corporation. Intel, the Intel logo, and other Intel marks are trademarks of Intel Corporation or its subsidiaries. Other names and brands may be claimed as the property of others.